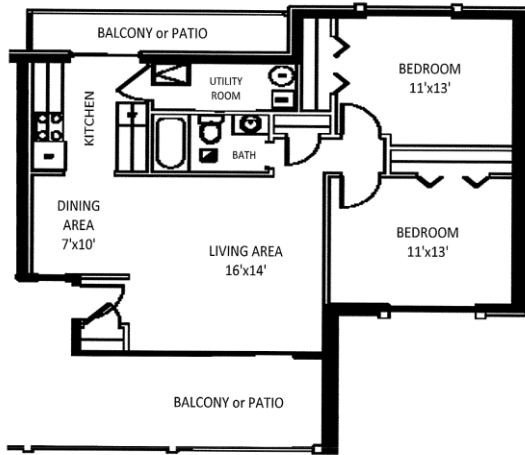
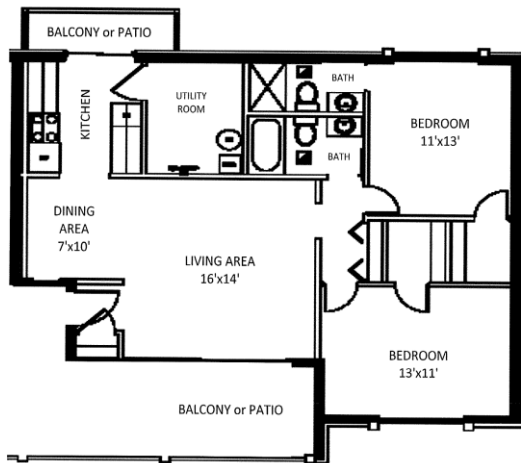


**Two Bedrooms & One Bathroom
870 square feet**



**Two Bedrooms & Two Bathrooms
980 square feet**



Monthly Rent: **\$890/\$930**
PER UNIT

Unit Type: 2bd/1ba
2bd/2ba

Application Fee: \$50/person

Administrative Fee: \$100 apt.

Holding Fee: \$300 (deducted from Deposit)

Deposit: 1 month's rent, minus the \$300 holding fee

Shelley Becker
Apartment Manager & Leasing Agent
shelleyb@raulwalters.com

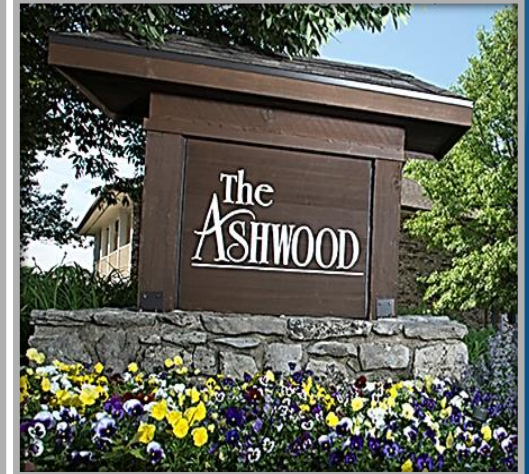
Leasing Office:
1021 Ashland Road, Ste. 1405
Columbia, Missouri 65201

573-443-6311
aptinfo@raulwalters.com

Office Hours:
9:00am to 5:00pm
Monday to Friday

www.rentashwoodapartments.com

ASHWOOD APARTMENTS



Ashwood Apartments is a highly sought after, well-maintained complex steps from the Mizzou campus and minutes from the University Hospital and downtown Columbia.

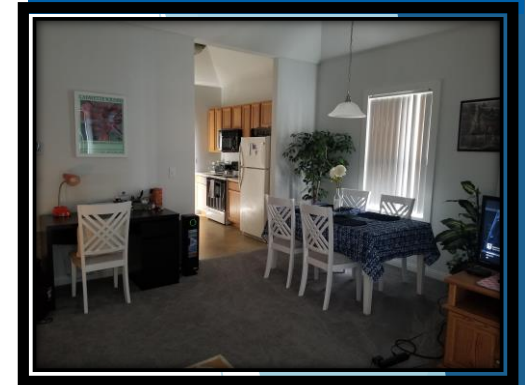
We rent by the lease.

1021 Ashland Road
Columbia, MO 65201



- Washer/Dryer in Every Unit
- Free Parking
- Oversized Bedrooms
- Front & Back Balconies/Patios
- 24-hour Maintenance
- On-site Friendly Management
- Snow and Ice Removal
- Outside Pool
- Near University Hospital

We do all we can to provide great customer service.



Walking Distance to:

- ❖ University Hospital 0.5 miles
- ❖ MU Vet School 0.3 miles
- ❖ MU-Medical School 0.6 miles
- ❖ MU-Nursing School 0.6 miles
- ❖ MU-Ellis Library 0.8 miles
- ❖ MU-Law School 0.9 miles

