

GARDEN STATE PARKWAY

1705 Wildwood Blvd., Rio Grande, NJ 08242



Raul Walters
PROPERTIES



Property Information:

- Interchange Location
- Across Street from ShopRite Grocery
- Located at Signalized Intersection
- Total Building Size – 2,714 sq. ft.
- Total Lot Size – 1.13 acres

Demographics:

Estimated Population in 2017
Average Household Income
Median Household Income

3 mile	5 mile
11,855	45,372
\$68,788	\$68,683
\$53,111	\$50,033



**For More Information
Contact:**
Raul Walters Properties

314.584.1606 ext.2

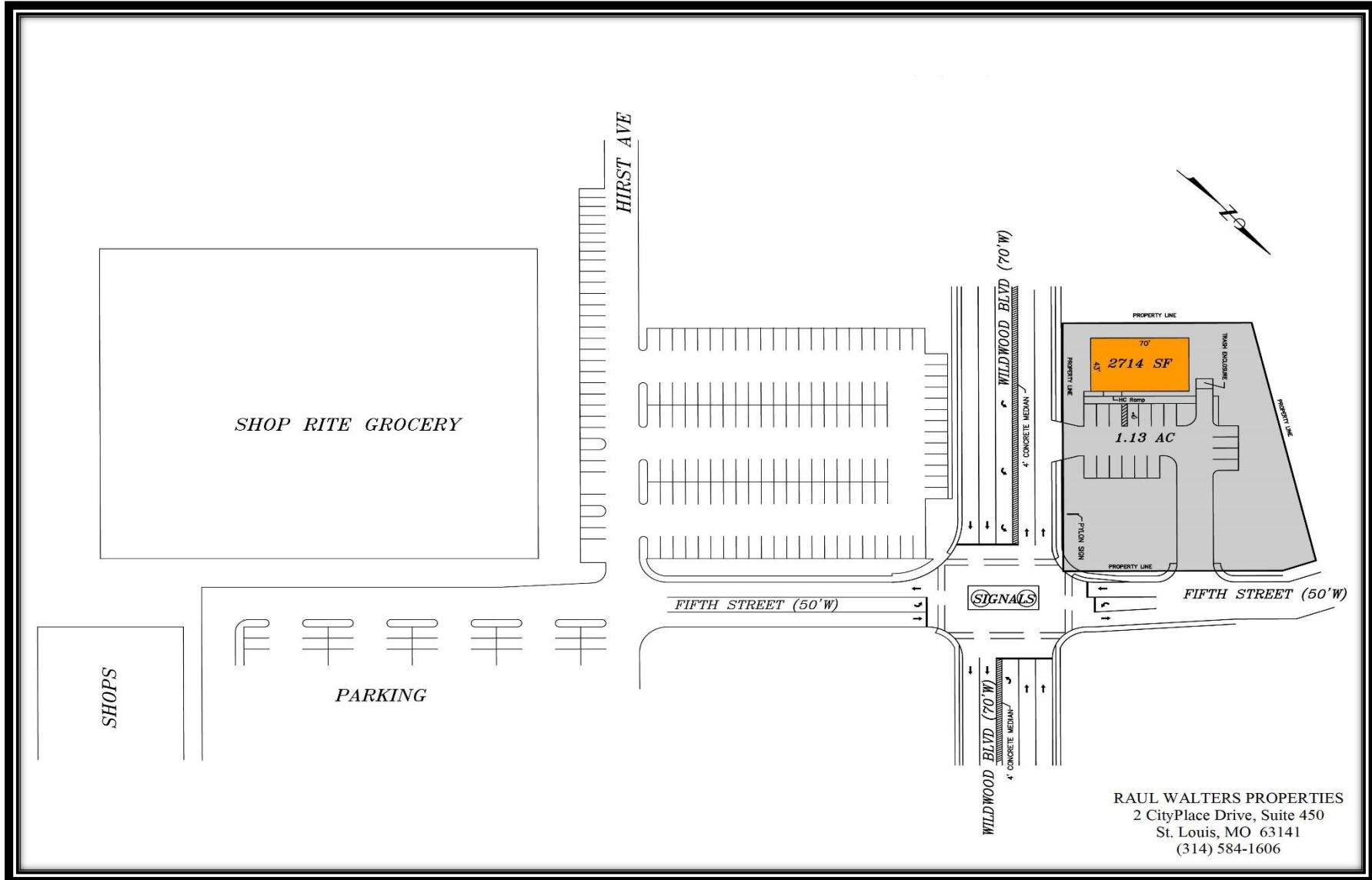
Office Address:
Two CityPlace Drive
Suite 450
St. Louis, MO 63141

GARDEN STATE PARKWAY

1705 Wildwood Blvd., Rio Grande, NJ 08242



Raul Walters
PROPERTIES



RAUL WALTERS PROPERTIES
2 CityPlace Drive, Suite 450
St. Louis, MO 63141
(314) 584-1606

GARDEN STATE PARKWAY

1705 Wildwood Blvd., Rio Grande, NJ 08242



Raul Walters
PROPERTIES



Disclaimer: The above information is based on current marketing conditions. No warranty or representation, expressed or implied, is made as to the accuracy of the information contained herein. Prospective customers should conduct their own due diligence. Raul Walters Properties shall not be responsible for any inaccurate information.